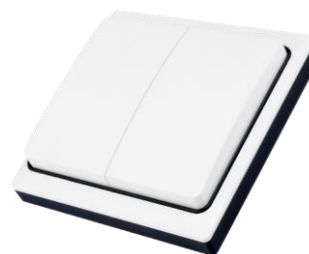




Product Description

HBKS02D series is a double rocker Bluetooth kinetic switch (self-powered), with a lifespan of 100,000 repeated presses, and available in black and white. It requires no batteries or wiring, offering the flexibility to be freely placed or adhered to according to the needs. Moreover, HBKS02D series features "short press" and "long press" button combinations, allowing to achieve dimming control, scene recall, and quit manual mode through the **Koolmesh[®]** app. All simple device setup and commissioning can be done via the **Koolmesh[®]** app.



App Features

Single Short Press

1. On/Off control
2. Scene recall
3. Quit manual mode

Press And Hold

1. Dimming control
2. Colour tuning (Warm to Cool White)

Hardware Features

- Self powered
- Without battery
- Without wiring
- Freely placeable
- Waterproof (no electric shock)

Technical Specifications & Dimensions

Bluetooth Transceiver	
Operation frequency	2.4 GHz -2.483 GHz
Transmission power	0 dBm
Range (Typical indoor)	10~30m
Protocol	Bluetooth [®]

Note: Bluetooth transmission performance may be affected by various factors, including but not limited to the force applied to buttons during operation (which may impact power supply stability) and actual environmental conditions such as electromagnetic interference and physical obstructions.

Overview	
Power supply	Self-powered (kinetic energy)
Channels	4 (double rocker)
Mounting	Adhesive pad option is being supplied in the box, for use on smooth surfaces only
Lifetime	100,000 actuation (switching cycles)
Housing material	PC IP20
Switch pressing force	≈ 800g (reference only, individual variations exist)
Dimensions	86 x 86 x16.5mm
Operation temperature	Ta: -10°C ~ +40°C
P rating	IP20

Bluetooth[®] 5.0 SIG mesh

IOS
Android

for IOS

for Android

Smartphone app for both iOS & Android platform

for iPad

for iPad

Koolmesh Pro app for iPad

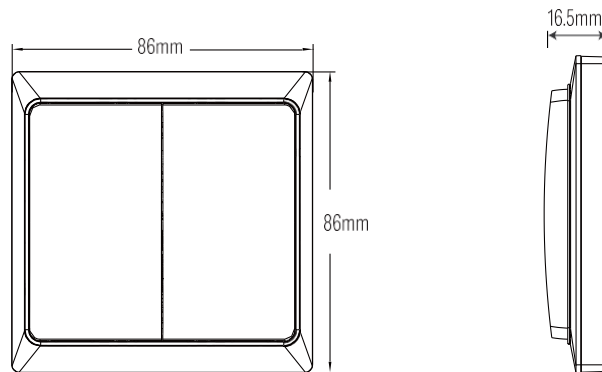
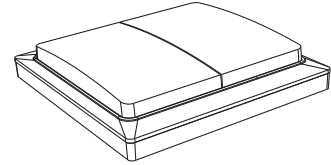
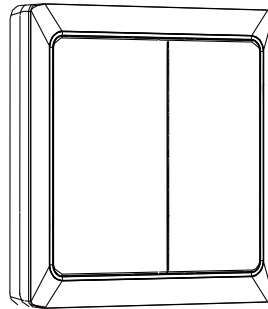
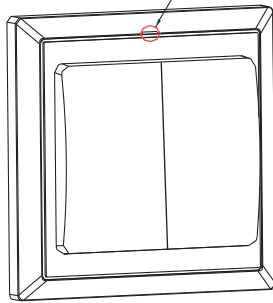
Web

for Web

Web app/platform: www.iot.koolmesh.com

Mechanical Structure & Dimensions

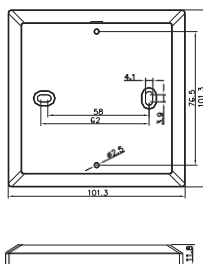
With accessories: This notch facilitates prying out.



Optional Accessories For Switch Bezel

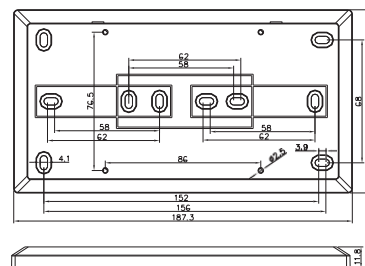
The Switch Bezel is an accessory for Hytronik kinetic switches. It enhances accessibility, especially for those with impaired vision or limited hand mobility. Compliant with the UK's Part M regulations, it ensures safe and easy usage for everyone.

HAKS01/W, HAKS01/B (size:mm)



For the installation of a single switch

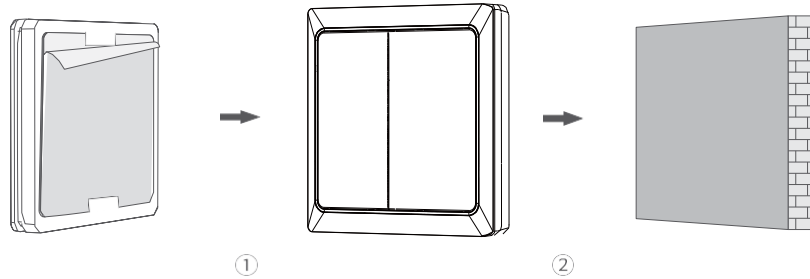
HAKS02/W, HAKS02/B (size:mm)



For the installation of double switches

Method 1: Adhesive Mounting

*If the wall surface is clean and smooth, directly peel off the double-sided adhesive tape and stick the switch to the wall.

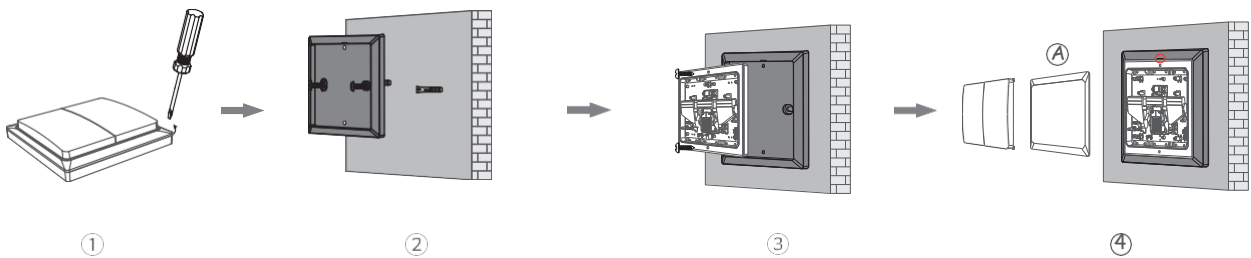


Tear off the 3M adhesive tape provided with the switch and attach it to the back of the switch, then remove the protective film of the 3M adhesive.

Press the switch firmly onto the wall to ensure stable adhesion.

Method 2: Installation Onto the Wall Using the HAKS01.

*Without the switch bezel, the switch cannot be mounted directly onto the wall



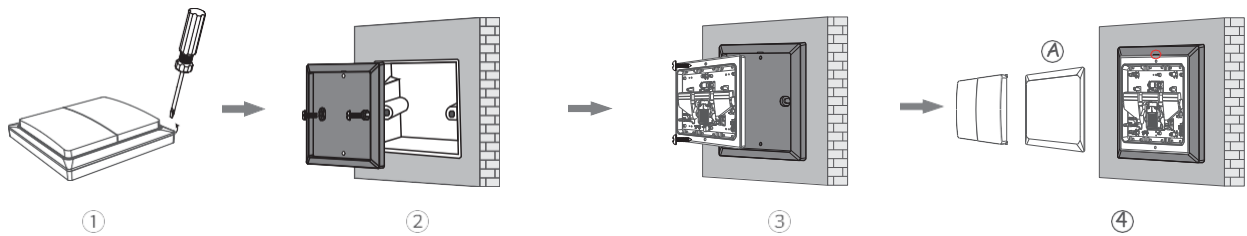
Use a prying tool or screwdriver to carefully lift and open the switch bezel.

Secure the HAKS01 to the wall with $\varnothing 4.0 \times 20$ mm screws.

Secure the switch to the HAKS01 with $\varnothing 3 \times 8$ mm screws.

Snap the cover into the base to complete the installation. (Please refer to the "Note" on page 4 for more information.)

Method 3: Installation Onto the Switch Box Using the HAKS01.



① Use a prying tool or screwdriver to carefully lift and open the switch bezel.

② Secure the HAKS01 to the switch box with Ø4.0×30mm screws.

③ Secure the switch to the HAKS01 with Ø3×8mm screws.

④ Snap the cover into the base to complete the installation.
(For details, refer to the "Note" below.)

⚠ *Note: Please control the screw tightening torque during assembly (recommended $\leq 0.1 \text{ N}\cdot\text{m}$) to avoid panel deformation caused by uneven stress, which may affect button feel or function. Proper torque ensures both structural stability and appearance quality.

*Note: For future switch repositioning or replacement.

At the accessory groove, use a pry tool or a Ø3mm screwdriver to gently lift and remove the A border. This will expose the two screw holes from installation step 3, enabling future disassembly or replacement.

Dimming Interface Notes

Detailed Push switch configurations can be set on Koolmesh app.

Switch Function	Action	Descriptions
Push switch	Short press (<1 second) * Short press has to be longer than 0.1s, or it will be invalid.	<ul style="list-style-type: none"> - Turn on/off - Turn on only - Turn off only - Recall a scene - Quit manual mode - Do nothing
	Long press (≥ 1 second)	<ul style="list-style-type: none"> - Dimming - Colour tuning (Warm to Cool White) - Do nothing

For more information, please contact iot@lenalighting.pl