

Bluetooth 5.0 Real-time Keeper & Repeater Module

W02996 Module TK BT HYT HTG01/F IoT
 624933 Module TK BT HYT HTG02/F +antenna IoT
 625152 Module TK BT HYT HTG02/F +antenna IP67 box IoT



LENA LIGHTING

Clue

Product Description

HTG01/F & HTG02/F are Bluetooth modules with a real-time chip built-in that can keep real time running for up to 12 weeks during power loss, which is very convenient for Bluetooth system/network where there is constant need for power on/off. When a product group mesh network is created, the entire network takes HTG01/F or HTG02/F as the authoritative time. External Bluetooth antenna can be connected for a longer Bluetooth broadcast distance.



HTG01/F



HTG02/F

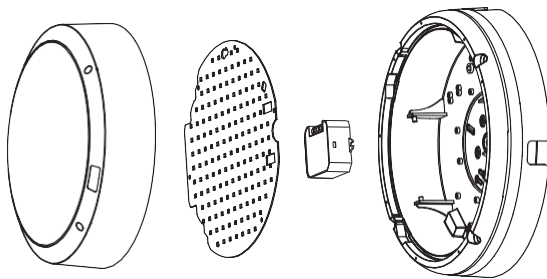
App Features

- Compatible with EnOcean BLE switches
- Grouping luminaires via mesh network
- Device firmware update over-the-air (OTA)
- Continuous development in progress...

Hardware Features

- Two optional reinforced antenna available
- Bluetooth range extender
- Ability to keep real-time for up to 12 weeks during power loss
- Compact design with two screw holes to be built inside luminaires
- Short-circuit protection
- 5-year warranty

Typical Switch Box Mounting

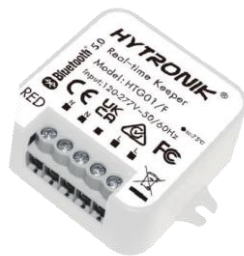


Optional accessory: Reinforced Bluetooth antenna

LENA LIGHTING | **Clue**

Smartphone app for both
iOS & Android platform

Web app/platform:
www.iot.koolmesh.com



HTG01/F

- ※Standard version
- ※Keep up to 12 weeks time during power loss
- ※Repeater / Bluetooth range extender
- ※Up to 30m transmission distance
- ※2 screw holes for mounting



HTG02/F

- ※Reinforced version
- ※Keep up to 12 weeks time during power loss
- ※Repeater / Bluetooth range extender
- ※2 screw holes for mounting



Antenna option 1

※ Up to 50m transmission distance



Antenna option 2

※ Up to 50m transmission distance

Technical Specifications

Bluetooth Transceiver	
Operation frequency	2.4 GHz -2.483GHz
Transmission power	4 dBm
Range (Typical indoor)	10~30m
Protocol	Bluetooth 5.0 SIG Mesh

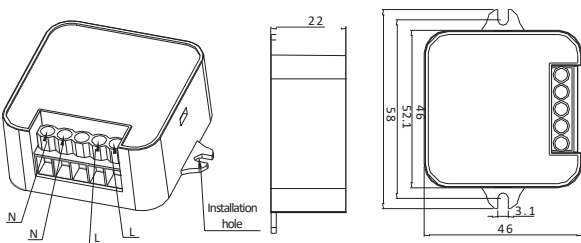
Safety & EMC	
EMC standard (EMC)	EN 55015, EN61547, EN 61000-3-2/3-3
Safety standard (LVD)	EN61347-1, EN 61347-2-11
RED	EN 300328, EN 301489-1/-17

Input & Output Characteristics	
Operating voltage	120~277VAC 50/60Hz

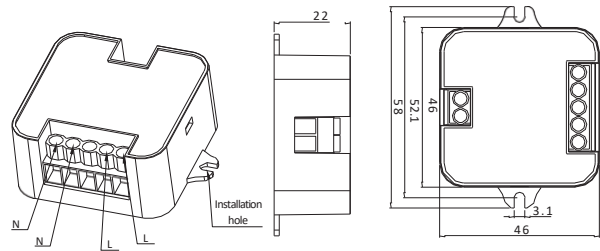
Environment	
Operation temperature	Ta: -20°C ~ +60°C
Storage temperature	-40°C ~ 70°C
Relative humidity	10 ~ 90%
IP rating	IP20
Insulation	Class II

Mechanical Structure & Dimensions

HTG01/F



HTG02/F

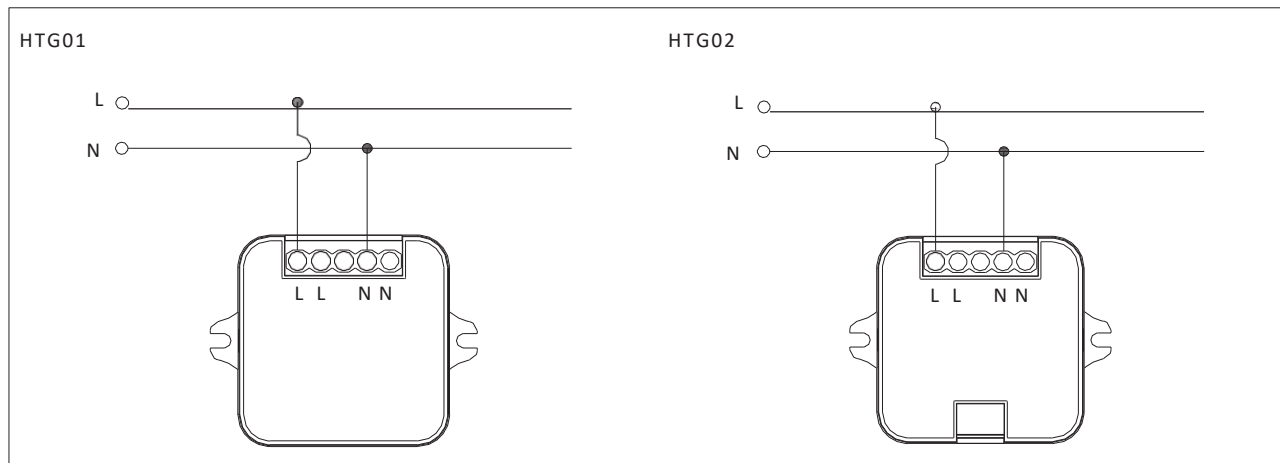


Wire Preparation



To make or release the wire from the terminal, use a screwdriver to push down the button.

Wiring Diagram

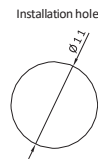
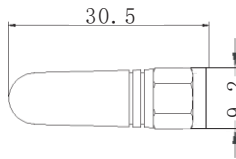


Optional accessory: Reinforced Bluetooth antenna

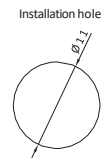
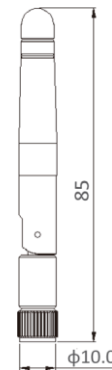
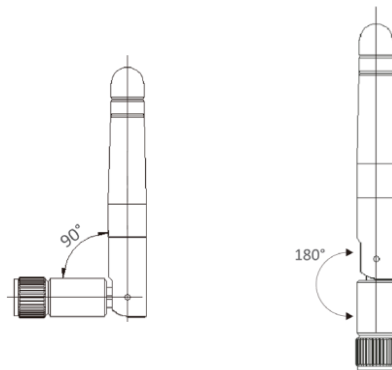
For some special Applications, customers may need a larger Bluetooth transmission for both smartphone to device and device to device. Thanks to the reinforced Bluetooth antenna (optional 1 or optional 2 to choose from), with it being added to the HTG01/F or HTG02/F, the transmission distance (smartphone to device) enlarges to 20m, the distance of device to device is around 50m.



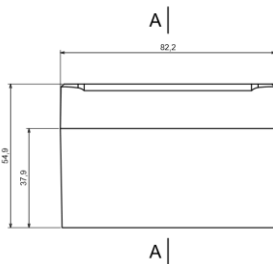
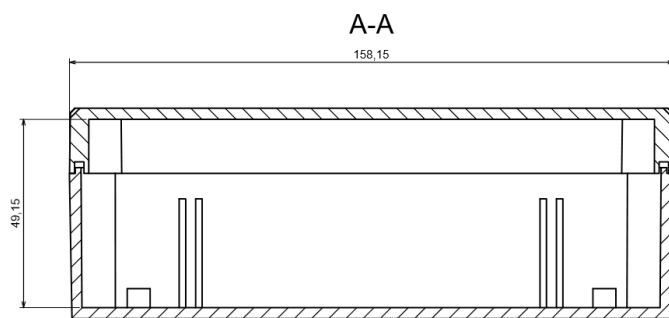
Option 1



Option 2



Optional equipment– Hermetic box Z-58 IP65 (625152)



Manufacturer's code	Dimensions			Color	Mass [g]
	S	W	D		
Z-58G	82,2	54,9	158,2	RAL7035	401

For more information, contact iot@lenalighting.pl